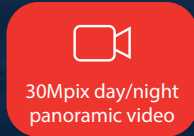


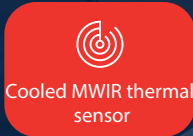


SPYNEL-S

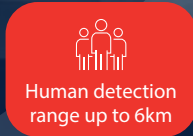
Wide Area Surveillance Solution



30Mpix day/night panoramic video



Cooled MWIR thermal sensor

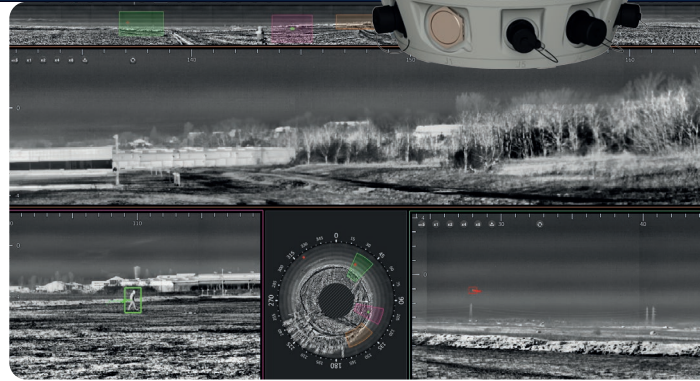


Human detection range up to 6km

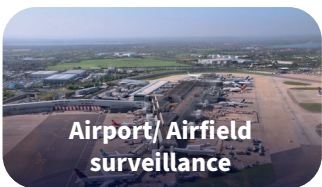
360° PANORAMIC DETECTION, ANYWHERE, ANYTIME

SPYNEL® are proven wide-area surveillance solutions, acquiring real-time panoramic thermal images with automatic detection, tracking and classification capabilities thanks to the integrated CYCLOPE software.

SPYNEL®-S integrates a MWIR 640 x 512 focal plane array to capture up to 30Mpix day/night video streams.



APPLICATIONS



BENEFITS




- Day & night panoramic imaging in total darkness in any weather conditions
- Human, vehicle, RHIB or UAV detection capabilities
- Automatic tracking and classification of any ground/sea/air threats
- Passive operation unlike radars (undetected, no EM disturbance)
- Proven, reliable COTS technology
- Robust and rapidly deployable
- Motorized tilt for fine-tuned installations
- All events recorded over 360°

SPYNEL-S

Wide Area Surveillance Solution

ref. SP-S-Lehall Spynel

TECHNICAL SPECIFICATIONS

	SPYNEL-S 2000	SPYNEL-S 6000
Horizontal FOV	360°	360°
Vertical FOV	20°	5°
Vertical motorized tilt	± 45° (motorized)	± 45° (motorized)
IFOV	0.6 x 0.6 mrad x mrad	0.15 x 0.15 mrad x mrad
Scanning speed	2 rps (360°/0.5sec)	0.5 rps (360°/2sec)
Detector type	MWIR 640x512 FPA	MWIR 640x512 FPA
Cooling	Stirling microcooler	Stirling microcooler
Image resolution	11 500 (H) x 640 (V)	46 000 (H) x 640 (V)
Video output and control	IP	IP
Dimensions (Dia x H)	385 mm x 580 mm	385 mm x 580 mm
Weight	< 40 kg	< 40 kg
Operating temperature	-40°C to + 71°C	-40°C to + 71°C
Protection standard	IP 66	IP 66
Power supply	24V DC / 10 Amps	24V DC / 10 Amps
Detection range for		
human: 	Up to 1.5 km	Up to 6 km
Vehicle: 	Up to 3.5 km	Up to 10 km
RHIB: 	Up to 3.5 km	Up to 10 km

Detection ranges according to Johnson criterium and STANAG standards

CONTROL AND DISPLAY SOFTWARE



Advanced video processing

Artificial Intelligence, smart image enhancements, detection/classification algorithms, data fusion



Multi-layer display

Real-time panoramic or zoom display, geolocation of threats



High integration capabilities

ONVIF, H264, XML, MIME, TCP/IP, Client/Server



Advanced Alarm Management

Track analysis to trigger alarms and customized security actions



Enlighten the Unseen

Contact us: hgh@hgh-infrared.com | www.hgh-infrared.com

EUROPE

HGH SYSTEMES INFRAROUGES

10 rue Maryse Bastié
91430 Igny, France
Phone: +33 1 69 35 47 70

USA

ELECTRO OPTICAL INDUSTRIES

320 Storke Rd., Ste. 100
Goleta, CA 93117, USA
Phone: 805.964.6701

ASIA

ASIA INFRARED SYSTEMS

1 Paya Lebar Link, #04-01
Singapore 408533
Phone: +65 6955 8585