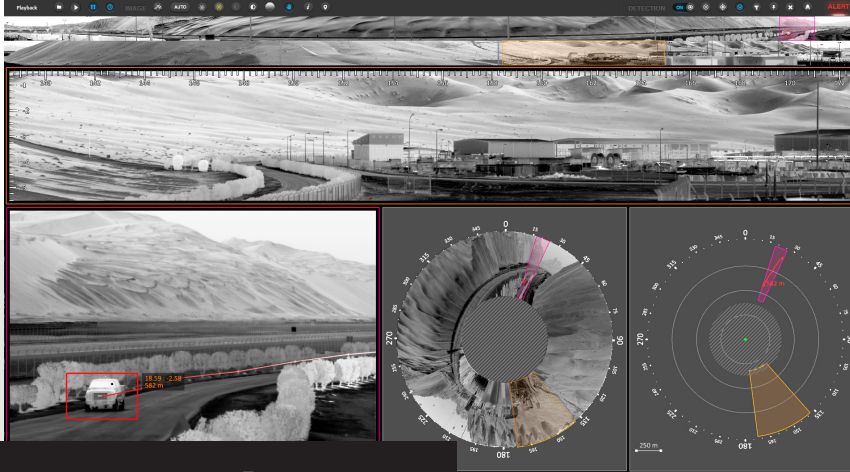




SPYNEL

→ SPYNEL Critical Infrastructure Surveillance



# Spynel-M

**INFRARED RADAR** for **WIDE AREA SURVEILLANCE**



## LIGHTWEIGHT PANORAMIC THERMAL SURVEILLANCE SYSTEM

SPYNEL-M is the latest in the SPYNEL series and benefits from HGHI's 15-year expertise in automatic intrusion detection and tracking systems, for wide area surveillance applications. SPYNEL-M is a high-resolution panoramic thermal camera, acting as an infrared radar. Robust, lightweight, transportable, SPYNEL-M is easily carried in a backpack. It can be fixed on top of a building, or quickly and discreetly deployed on a light mast, to perform multi-event detection over extremely large areas in total darkness. Consuming only 8 watts of power, it can be operated with solar or alternate power supply systems to allow remote, disconnected operation. Requiring no maintenance, SPYNEL-M brings the highest technology at a fair cost for the surveillance of critical infrastructures.

## HIGH-END SITE PROTECTION DEPLOYED IN MINUTES

→ SPYNEL-M INFRARED RADAR

SPYNEL-M continuously captures full panoramic images every second, or can perform sector scanning at a higher rate, to bring real-time security against conventional and asymmetrical threats. It can also operate in staring mode at fastest rate, for target recognition. A single SPYNEL-M sensor can perform 24/7 early human intrusion alerts over a 1.5km-diameter area and can be quickly deployed and configured. Any threat will be tracked at any time from any direction, including hardly detectable targets such as: crawling men, RHIBs, low altitude air targets, UAVs and stealth aircrafts. SPYNEL-M can replace up to 16 traditional cameras in one single sensor head. As a completely passive system, the SPYNEL-M is invisible to intruders, requires no additional illumination and cannot be tricked by camouflage nor jamming.

## APPLICATIONS

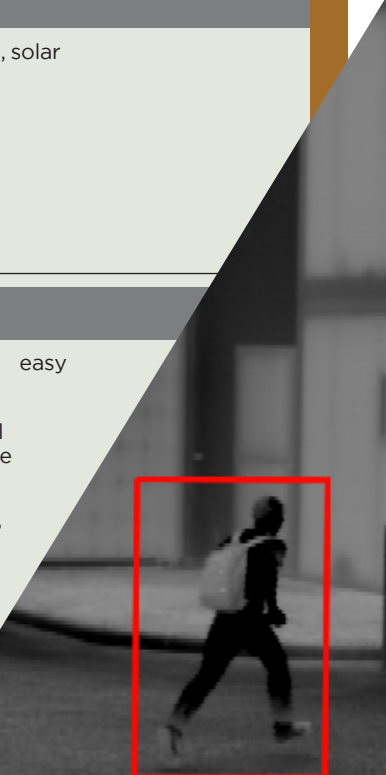
- Critical infrastructure protection (power stations, data centers, dams, prisons, water treatment stations, solar and wind farms, oil depots, ammunition dumps...);
- 24/7 perimeter security
- 360° detection of asymmetrical threats
- Airport / Port surveillance
- Special Operation Forces
- VIP and event security
- Fire detection

## BENEFITS

- Cost effective, low power consumption and reliable
- Full 360° panoramic coverage with a single sensor
- Day and night scrutiny even in adverse weather conditions
- Fully passive system, totally undetectable unlike radar
- Fast deployment and easy installation
- Automatic tracking of all threats with superior image quality
- Uncooled IR technology, maintenance-free.



→ Infrared panoramic detection and tracking

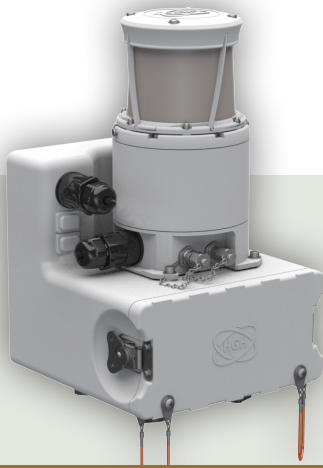


# Spynel-M

INFRARED RADAR

for WIDE AREA SURVEILLANCE

ref: SPM-Lenrail





→ SPYNEL-M's Mobile Deployment Kit (battery, wireless link, rugged tablet)



Fixed installation at the top of a mast →

## TECHNICAL

### SENSOR

	Spynel-M 300 W	Spynel-M 300 N	Spynel-M 600 W	Spynel-M 600 N
Horizontal Field of View	360°	360°	360°	360°
Vertical Field of View	30°	18°	36°	18°
Vertical Adjustable Tilt	-18°/+18°	-18°/+18°	-18°/+18°	-18°/+18°
Scanning Rate	1 Hz (360° / 1sec)	0.5 Hz (360° / 2sec)	1 Hz (360° / 1sec)	0.5 Hz (360° / 2sec)
Sector Scan Rate	1.5 Hz on 180-degree sector 2.5 Hz on 90-degree sector ...	0.8 Hz on 180-degree sector 1.5 Hz on 90-degree sector ...	1.5 Hz on 180-degree sector 2.5 Hz on 90-degree sector ...	0.8 Hz on 180-degree sector 1.5 Hz on 90-degree sector ...
Detector Format (Horizontal)	>300 pixels	>300 pixels	>600 pixels	>600 pixels
Image Resolution	0.7 Mpixels	1.4 Mpixels	2.6 Mpixels	5.2 Mpixels
Video Output and Control	TCP/IP	TCP/IP	TCP/IP	TCP/IP
Optional Communication	Wireless	Wireless	Wireless	Wireless
Dimensions (Diam. x Height)	125 mm x 200 mm	125 mm x 200 mm	125 mm x 200 mm	125 mm x 200 mm
Weight	1.8 kg	1.8 kg	1.8 kg	1.8 kg
Power Supply	24 V / Power over Ethernet	24 V / Power over Ethernet	24 V / Power over Ethernet	24 V / Power over Ethernet
Power Consumption	8 W	8 W	8 W	8 W
Operating Temperature Range	-40°C / +55°C	-40°C / +55°C	-40°C / +55°C	-40°C / +55°C
Protection Standard	IP 66	IP 66	IP 66	IP 66
Detection Range For				
Human : 	Up to 250 m	Up to 400 m	Up to 400 m	Up to 700 m
Car : 	Up to 600 m	Up to 900 m	Up to 900 m	Up to 1,500 m

Detection ranges according to Johnson criterium and STANAG standards

### CONTROL AND DISPLAY SOFTWARE

Software functions: Get full advantage of Spynel sensor with Cyclope software. Cyclope provides, at a glance, **real time panoramic display** (360° strip, annular, radar & zoom views), **3D detection** capabilities, **unlimited targets designation and tracking**, immediate **threat location** (azimuth, elevation, distance), GPS, AIS and radar **data integration**, automatic **control of PTZ** systems for target identification, **forensic capabilities** (timeline, sequence storage and playback), spatial and temporal bookmarks, multiple threats displayed on situation map, fine image stabilization and more...



www.hgh-infrared.com

#### Headquarters

**HGH SYSTEMES INFRAROUGES**  
10 rue Maryse Bastié  
91430 Igny, France  
**Phone:** +33 1 69 35 47 70  
**Fax:** +33 1 69 35 47 80  
**Email:** sales@hgh.fr

#### US Office

**ELECTRO OPTICAL INDUSTRIES**  
320 Storke Rd., Ste. 100  
Goleta, CA 93117, USA  
**Phone:** 805.964.6701  
**Fax:** 805.967.8590  
**Email:** sales@electro-optical.com

#### Asia Office

**ASIA INFRARED SYSTEMS**  
541 Orchard Rd., #09-01 Liat Towers  
Singapore 238881  
**Phone:** +65 6933 1394  
**Email:** sales@hgh-infrared.com